



PROTECT
PRESERVE
PROMOTE



Fall 2009



www.WabashValleyTrust.org

THE TRUST

is a leading force in the community, championing historic preservation which enhances the quality of life for all citizens.

OUR MISSION

is to promote historic preservation through restoration and visibility of the architectural heritage of our community.



OFFICE LOCATION:
14 North Third Street
Lafayette IN

MAIL:
PO Box 1354
Lafayette IN 47902



Phone: 765.420.0268

THE WABASH VALLEY TRUST

FOR HISTORIC PRESERVATION



Three homes at, 851 Rose Street (W. Lafayette), 412 South 9th Street, and 502 Perrin Avenue (Lafayette), and will be recognized on October 29th as outstanding examples of our community's historic residential architecture.



Fall Plaque Presentation October 29 • 6:30p



Please join us on Thursday, October 29th, 6:30p, at the Renaissance Revival home of Jim & Marifran Mattson, 412 South Ninth Street, as 3 local homes are awarded the Trust's Sycamore Leaf Preservation Plaques. At the ceremony, you will experience for yourself the architectural beauty of the Vyverberg-Ellis-Drysdale-Mattson House, built in 1909, hear the fascinating history of all these 3 houses and enjoy light refreshments. Other recipients are the home at 851 Rose Street in West Lafayette, built c.1925 in a vernacular style using unique sheet metal panel construction, currently owned by Art and Mary Remnet, and the home at 412 Perrin Avenue in Lafayette, built c.1907 in the American Four-Square style, currently owned by Robert Soden.

This event is FREE and open to the public.

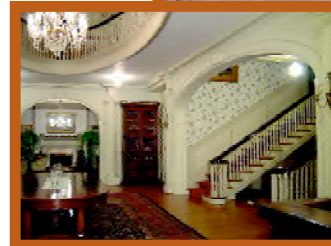


"Tours, Tunes & Tastes" Gala Annual Meeting November 12

Tours, dinner, wine tasting, and soft jazz will bring gala and glamor to the Trust's Annual Meeting on November 12, 6:30-9:00p at the home of Bob and Ellie Haan. Members will enjoy tours of the interior of the mansion with its outstanding collection of Indiana art and extensive display of American antique furniture.

Caterer Tracy Hilburn has created a special dinner menu featuring "new" tastes introduced at the 1904 World's Fair. Guests will enjoy select wines throughout the evening, and Judd Danby's Jazz Trio will add a magical touch to this elegant event.

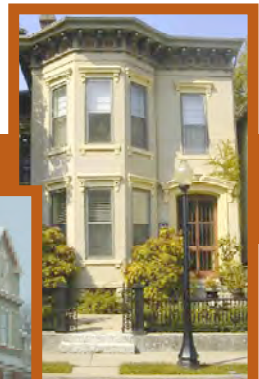
"Tours, Tunes & Tastes" is a members-only event at \$35/person. Members may make pre-paid reservations by phone, online or at the Trust office. Non-members may make a \$50/person pre-paid reservation which includes Trust membership through May 2010. For more information, please contact the Trust office at 765.420.0268.



(more pictures on page 6)

The Haan Mansion was the Connecticut State Pavilion at the 1904 World's Fair in St. Louis as pictured above.

Following the Fair, the home was dismantled and relocated to 920 State Street in Lafayette. Today, the restored 21' x 40' Great Hall, pictured above, reflects the grand scale of the home and sets the stage for guests to enjoy the Haans' extensive art collection. *"(The Haans' collection) is the largest and most significant collection of historic Indiana art in the country, if not the world."* Laurette McCarthy, Art Historian



Holiday Tour of Historic Homes December 13

The Trust's **Holiday Tour of Historic Homes** will showcase 3 restored homes in Lafayette's Centennial Neighborhood, each of which displays the the Trust's green Sycamore Leaf Plaque.

From 2-5 on Sunday afternoon, December 13, guests will enjoy touring the homes, light refreshments, music, and perhaps may catch a glimpse of the Old Elf making a early visit!

Featured homes are the 1870 Peirce-Byers-McIlwain House at 416 North Seventh Street (Brian Dekker, owner), the 1892 Gouloos House at 640 Ferry Street (Tim & Erin Vanderkleed, owners), and the 1887 Kellogg-Atlas Townhouse at 511 North Seventh Street (Dr. Bill Bray, owner).



TOUR
TICKETS

on sale

November 16

\$15 per person



JAN PAYNE NAMED INTERIM EXECUTIVE DIRECTOR



I am so happy to be working with the Wabash Valley Trust Board of Directors - this is such an exciting time for the Trust!

We have two projects that we are working on with CHDO (Community Housing Development Organization)/HOME funds through the Lafayette Housing Consortium. The 1720 Morton Street project is nearing completion under the direction of our contractor David Stout. Morton Street is a great 2 bedroom home that will be move-in ready for a someone looking for a completely renovated home.

206 Railroad Street in Battle Ground, scheduled to be completed in late April, will be a 2 unit home (a 1 bedroom unit on the first floor and a 3 bedroom on the ground floor). Chris Tabor is the contractor partnering with WVT on this huge highly visible project.

In addition to our CHDO/HOME Funds projects, I am eager to foster volunteer opportunities for members and citizens to become more knowledgeable and involved in historic preservation. Please call me if you are interested!

I am looking forward to the exciting events the Trust is planning for the rest of this year: the October 29th Plaque presentation, the Gala Annual Meeting at the Haan Mansion, and the Holiday Home Tour of 3 of the Trust's plaqued houses. I look forward to seeing you at these events!

Jan



From "Private Light," a stained glass postcard collection published by the Wabash Valley Trust. Complete sets of 12 are available at the Trust office.

GREETINGS

to Members, Sponsors,
Contributors and
Preservationists!



Trust President **Shirley West** and
Vice President **Richard Stout**

The Trust has had an extraordinary year! In June, we moved from Graves House at Fifth and North Streets to our wonderful new office at 14 South Third Street, made possible by the generous support of Mark Scherer. Please come by and visit us and use our resource materials when you are downtown.

I wish to sincerely thank Mary Whittaker, our former Interim Executive Director for her service to the Trust for nearly two years. She accomplished many special things for the Trust and we are truly appreciative. Also I wish to thank Carl Dillman, our Bookkeeper and assistant to Mary for his dedication and diligence with all of our projects in the last 2 years that he served the Trust. Without the efforts of both of these employees, the Trust could not have functioned as well during their tenure.

As we move forward we welcome our new full-time Interim Executive Director Jan Payne who began her employment with us in August; she is doing a wonderful job! We are excited to have Jan and look forward to great leadership and smooth operation of our organization for years to come.

The Trust has two HOME funds projects which are progressing well, one on Morton Street in Lafayette and one on Railroad Street in Battle Ground. The Morton Street house is expected to be completed in October of this year and we are hoping to find a qualified buyer as soon as the project is completed. The house in Battle Ground is a larger project with incredible change from what it was when we began. It is not due to be completed until Spring of 2010. (see pictures on page 4)

Our Board of Directors has been hard at work creating a vision and direction for the Trust in the future. To that end a Strategic Plan was developed to be implemented over the next 5 years and our new Strategic Plan Implementation Committee will be working to develop the processes for achieving our goals. Thanks to our Governance Committee we have updated our Bylaws and are compiling a Policies & Procedures Manual for efficient operation of the organization.

Our financial situation is becoming much better than it has been at times in the past, thanks in part to our obtaining reimbursement for the funds invested in stabilizing the four historic buildings at the Indiana Veterans Home. We give our sincere thanks to Senators Hershman and Alting and Representatives Truitt and Klinker for accomplishing this task.

The entire Board of Directors has been a tremendous support and help to me so far in my year as President of the Board and I offer my heartfelt thanks to them. We look forward to great times ahead!

Shirley

ALL ARCHITECTURE is shelter, all great architecture is the design of space that contains, cuddles, exalts, or stimulates the persons in that space.

PHILIP JOHNSON



MARY WHITTAKER HONORED FOR OUTSTANDING SERVICE AS TRUST DIRECTOR



Retiring Interim Director of the Trust, **MARY WHITTAKER**, receives an official commendation from the Indiana Legislature from State Representative, Sheila Klinker. The Board of Directors hosted a reception on August 6th to thank Mary for her leadership and loyal service to the Trust.



PATTY BARRETT: A VOICE FOR THE COMMUNITY!

In our new offices we have some history: our own history! We thank long-time Trust member **PATTY BARRETT** for her continued vision and generosity.

In 2001-2002, Patty graciously endowed and furnished the Barrett Community Room in the Graves House, which also housed the Trust's offices.

When the Trust vacated Graves house last summer for our new space on Third Street, Patty's vision came with us! The custom-designed Sycamore Leaf stained glass window and the brass plaque are now appropriately displayed in our new offices. Soon, we hope to create a new "Barrett Community Room" space to provide a research, archive, and a gathering area for the community's preservation needs and pursuits. Again - thank you, Patty!



CARL DILLMAN RETIRES AS OFFICE MANAGER



We thank **CARL DILLMAN** for his two years of work with the Trust. Carl was always on hand and ready to help! We especially appreciate his assistance in our preparing Graves House for return to Trinity Church, his photography, and his "as needed" support at events and meetings. Carl kept the office running while producing newsletters, serving as bookkeeper, and dispatching info for monthly Board meetings. We wish you the best in your new job, Carl!

WABASH VALLEY TRUST 2009 BOARD OF DIRECTORS

James Andrew
Eileen Booth
Jane Boswell
Bill Bray
Brian Bugajski
Nicholas Carson
Susan Curtis
Brian Dekker
Sandy Lahr
Dick Nagel
Persis Newman
Terry Phillips, Treasurer
Paul Schueler
Nick Soodek, Secretary
Richard Stout, Vice President
Tim Vanderkleed
Shirley West, President



WE'RE LOOKIN' GOOD - THANKS TO GREAT LAFAYETTE BUSINESS SUPPORT!

The Trust's new offices have put us right in the heart of the hustle and bustle of historic downtown Lafayette, and we're enjoying it!

We thank **MARK SCHARER** for his generous rental agreement and providing updated interior renovations.

PYRAMID SIGN and **REX DEATON** donated the signage on our street-level front door which has received rave reviews, even from casual passers-by.

Our thanks to both of these benefactors!



OFFICE & ORGANIZING THANKS!

Our recent move and staff changes were made much easier by the kind help of Trust friends. We are grateful to:

STEVE KLICK for solving reoccurring computer mysteries.

MARK DAVIS for his efficient tutorial on Quick Books.

BRITTANY BROWN for helping set up the office space.

PAUL SCHUELER for organizing our archives.

TERRY PHILLIPS for stepping in as Bookkeeper while we search to fill this new office position.

NICK CARSON for reorganizing and updating our membership and mailing databases.

BILL MELLETTE, our volunteer webmaster, for his continued cheerfulness as we send him "new" information!

SANDY LAHR, PERSIS NEWMAN, PATTY BARRETT & JANE BOGWELL for organizing Mary Whittaker's reception.



WELCOME NEW MEMBERS!

The Trust welcomes our newest members who have joined us since June. We appreciate their commitment to preservation in this part of the Wabash Valley!

Thomas & Margaret Abbott

Ron Alting

Buck Black

Kitti Carriker

Roland Ditto

Robert & Kathleen Gloyeske

Mary Louise Foster

William & Roberta Keirce

Gerry McCartney

Martha Sackett

Joe & Bernie Seaman

Chase Slaughter

Richard Stout

Sara Strickler

Arnold & Janet Sweet

David & Dorothy Taylor

Linda Tolley

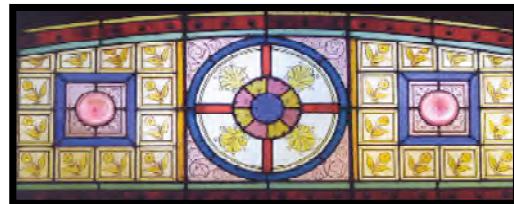
Randy Truitt

David J. Williams



MAY MEMBERSHIP RENEWAL

The Trust recently adopted an "easy to remember" May-to-May renewal cycle, but we've had a few "difficult" times with our data! We appreciate our **CONTINUING MEMBER**s and **PATRON**s for understanding our mailing errors and omissions. We are working hard to make it simple! Please call the office if you have any questions concerning your membership or contributions to the Trust! 765.420.0268.



From "Private Light," a stained glass postcard collection published by the Trust.

ARCHITECTURE should speak of its time and place,
but yearn for timelessness. FRANK GHERY

THE TRUST'S AFFORDABLE HOUSING PROJECTS.....



THEN (c.1960s) As pretty as a picture postcard! This image is from a postcard which named the house "McKinney Manor."



NOW (September 2009) Stabilization and restoration have begun!
Note that the sliding doors are now "history!"

206 RAILROAD STREET BATTLE GROUND

In the style of Second Empire, also called French Mansard, this home was built in 1886. The mansard roof, the major defining element of the Second Empire style, is a dual-pitched hipped roof. In addition to a mansard roof, the Second Empire style is characterized by lavish ornamentation and boldness of form. The roof ridges were decorated with cast iron cresting. The Second Empire style was well suited to the flamboyant post-Civil War and post-railroad era when ostentation and excessiveness of taste was not at all discouraged!

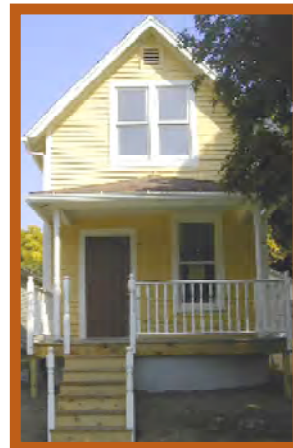
In the 1950s this home served as the Melvin Jackson Funeral Home and later it was used as a floral shop known as McKinney's Floral Shop. The home at one time had a green house located on the south side of the house. The house fell into disrepair in the 1990's and was acquired by the Trust for rehab in its affordable housing program.

1720 MORTON STREET LAFAYETTE

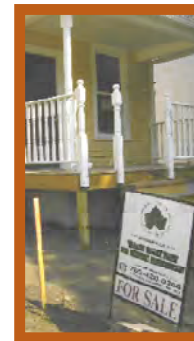
Possibly constructed in the 1860's, this gable-front home is located in Lafayette's North End Neighborhood. This style of home was first seen during the years when the Greek Revival style was popular in Indiana, from 1830-1860.

The development of urban areas as well as its adaptability to a variety of architectural styles caused the gable-front house to endure well into the early twentieth century.

This charming home will be offered for sale at \$79K for low-to-moderate income families. Down payment assistance will be available as part of the purchase package.



September 2009: We're getting close to completion!



The sign is posted!

ARCHITECTURE has recorded the great ideas of the human race.

Not only every religious symbol, but every human thought has its page in that vast book.

VICTOR HUGO

TRUSTworthy RESOURCES available

You're trying to find out the age of your home or the style of your storefront. You can't remember the name of those little wood thingies that divide up the glass in your Victorian windows. You're not sure how to be environmentally-friendly while remodeling your Craftsman Bungalow bathroom. Does that siding salesman really know what's appropriate for your Mid-Century home?

TRUST us. We can help. 

Stop by our office or give us a call. We have resources on site; we have a list of reliable contractors and specialists. If we don't

have an immediate answer for you, we're happy to help you find the people who do! By the way, those little wood thingies are called **MUNTINS**.

RANCH HOUSE, a recent donation to our library, is an extensive overview and history of this post-WWII housing movement. Yes, it's true: some houses 50 years old are now being designated "historic!"





May Tour a Huge Success!

The Trust and HLFI (Historic Landmarks Foundation of Indiana) thank homeowners, volunteers, and visitors for the fascinating and successful May tour of 5 Mid-Century Modern West Lafayette homes. The Trust and HLFI each realized a \$4000 profit!



Mid-Century Modern Home Tour
back to the future

Our special thanks to owners George Benda, Janet & Arnold Sweet, Connie & Dick Grace, Sara Strickler, and Phyllis & Sid & Kilsheimer for opening their Mid-Century homes, and to Dr. John Christian for hosting the pre-tour reception at Samara!

VOLUNTEER HIGHLIGHT BRITTANY BROWN

She's looking for the
FIRST National Home!

The Trust is benefitting from the skills and knowledge of one of its latest volunteers, Brittany Brown. A cum laude graduate of Ball State University's Interior Design program, she is currently pursuing a Master's degree in Historic Preservation through the Savannah College of Art & Design.

We are excited about Brittany's latest project! She is researching **NATIONAL HOMES**, its history and impact on post-WWII local and national housing. And, she has begun a search for Lafayette's very first National home!

The Trust hopes to find that first National home and invite the owners to allow Brittany to research possible designation with National Register of Historic Places, a Sycamore Leaf Trust plaque, or an Indiana Historic Marker.

Do YOU have any clues for Brittany's detective work? Pictures, brochures, records, promotions or other materials? Please contact her through the Trust office at 765.420.0268.



Local buildings tell local history

Purdue students enrolled in a course on **Houses, Culture, and American History** are conducting research on local public and private buildings that will shed light on various aspects of the community's history. They will present the fruits of their research in the form of **CALENDARS**, which the Wabash Valley Trust will sell just in time for the holiday season.

The project, which is supported by a Purdue University Service-Learning grant, provides advanced history students a chance to use their skills as historians to help the Trust further its mission to protect and preserve the history and architectural heritage of our community.

This service-learning course is being offered by Susan Curtis, a professor of history and a member of the Board of the Wabash Valley Trust.

For a sneak preview of this project, plan to attend the Plaque Presentation event on October 29th (details on page 1). The calendars will go on sale at the Holiday Home Tour on Sunday, December 13 at the Gouloos House and then will be available for purchase at the Trust office and online.

JOINING WITH PURDUE STUDENTS



Purdue history students recently presented an overview of their research to the Board of Directors of the Wabash Valley Trust.

56 years ago, from the Saturday Evening Post: an ad for National Home's "Exciting New 1953 Models!"

A modern, harmonic and lively **ARCHITECTURE**
is the visible sign of an authentic democracy. **WALTER GROPIUS**



WHAT ELSE IS NEW?

You can peruse the Trust's new **Bylaws** and recently adopted **Strategic Plan** on our website.

Because of those new Bylaws, at the Gala Annual Meeting on November 12th, Trust **members will officially elect new Directors** to the Board for the first time in our history. We promise: the actual "meeting" part of the Gala Annual Meeting will be **very brief!**

You've probably noticed our **new look!** We've kept the Trust's signature **Sycamore Leaf** and have combined it with **fonts** from the official Frank Lloyd Wright collection and with **colors** from both the Victorian age and mid-20th century. These elements were incorporated to reflect the many architectural styles throughout our community.

Come visit our **NEW** location! We're just a few steps south of the County Office Building. Look for the big Sycamore leaf on the door!

VOLUNTEER OPPORTUNITIES

- Serve as a **docent** (guide/host) or greeter for the Holiday Home Tour.
- Help out with **landscaping** on our affordable housing projects.
- Serve as a **receptionist** in the new office.
- **Research** information for National Register designation projects.
- Help **organize and catalogue** our resource library and archives.
- Help us design and set up a **gift shop** area in our new office location.
- **Install** new ceiling fans and lighting in the office spaces.
- Create a **database** of the awards, plaques, and recognitions given by the Trust.



The Trust welcomes **YOUR** gifts, large or small, important or seemingly inconsequential! Here's a current little "wish list" you might be able to help us with:

- copy paper
- file folders
- 2 ceiling fans
- wall-mount plexiglass brochure and literature racks
- fixtures for existing track lights
- a handrail for the office entry
- 2-3 lightweight folding tables
- heavyweight plastic storage bins

I know the price of **SUCCESS**:
dedication, hard work, and an unrelenting devotion
to the things you want to see happen. **FRANK LLOYD WRIGHT**

233 PLAQUES in 19 Years!

Lafayette's
Downtown &
Centennial
Neighborhood
have highest
numbers!



1990
2009

Location # Plaques

LAFAYETTE

Centennial Neighborhood	35
Columbian Park Neighborhood	1
Downtown	37
Ellsworth/Romig Neighborhood	10
Hanna Neighborhood	3
Highland Park Neighborhood	22
Jefferson Neighborhood	1
Lincoln Neighborhood	2
Ninth Street Hill Neighborhood	19
Perrin Neighborhood	14
St. Lawrence Neighborhood	1
St. Mary's Neighborhood	6
Vinton Woods Neighborhood	1
Wabash Avenue Neighborhood	2
Wallace Triangle Neighborhood	4
Scattered sites in Lafayette	36

WEST LAFAYETTE

Happy Hollow Neighborhood	3
Hills & Dales Neighborhood	11
New Chauncey Neighborhood	15
Northwestern Heights Neighborhood	1
Purdue University	6
Village	2
Wabash Shores Neighborhood	1
Scattered sites in West Lafayette	10

OTHER TOWNS & AREAS

Battle Ground	3
Brookston	2
Delphi	4
Otterbein	1
Shadeland	1
Tippecanoe County scattered sites	10
Veederburg	1
Wolcott	1

THANK YOU to the Preservation Committee and Chairman Nick Carson for continuing to research and update the Plaque database.

IF YOU ARE INTERESTED in having this prestigious designation for your property, info and applications are available on the Trust website. Or, please give us a call at the Trust office: 420-0268.

6

New Trust Publications Showcase Terra Cotta Ornamentation

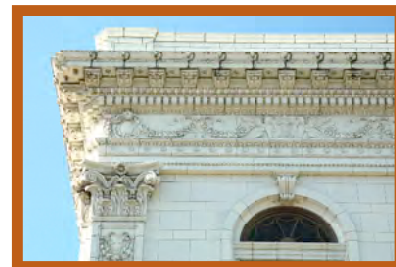
Trust Board member Eileen Booth has written two important guides for our community: an architectural terra cotta **walking tour guide** to educate tourists about these unique buildings and a **preservation guide** to educate building owners on best maintenance practices.

Eileen brought Susan Tunick, international terra cotta expert, to Lafayette for the Cornelius O'Brien Lecture. Tunick provided fascinating insight into the history and production of architectural terra cotta, the relationships between architectural terra cotta and pottery, the locations of historic terra cotta kilns, the hierarchy of professions within terra cotta factories, and the significance of the railroad for delivering terra cotta shipments.

Tunick was impressed with our community's terra cotta structures and consequently, the Friends of Terra Cotta March 2009 newsletter featured an impressive article on downtown Lafayette and West Lafayette's most significant terra cotta buildings. The newsletter shed an impressive light on the historic fabric of our community to an international audience.

The Terra Cotta walking tour and preservation guides will be available in February 2010 through the Trust. We are excited to be part of helping promote, protect and preserve the terra cotta structures in our community.

Support for publishing these guides has been generously provided by a Historic Preservation Education Grant from the Historic Landmarks Foundation of Indiana, the Indiana Humanities Council and the National Endowment for the Humanities.



The Murdock Building



125 South Fourth Street



Vintage postcard showing the Oppenheimer Building at 400 Main Street

We shape our BUILDINGS; thereafter they shape us.
WINSTON CHURCHILL

The Haan Mansion

"Tours, Tunes & Tastes"

Thursday evening
November 12th
6:30-9:00p



The Grand Staircase and triple French Doors. The "lady" on the table will be replaced with an array of sumptuous wines to accompany the catered dinner.

The Drawing Room. In this room, the Judd Danby Jazz Trio's soft tunes will fill the home during tours and dinner.

TRUST MEMBERSHIP

Please complete the form below and return it with payment to:
Wabash Valley Trust • PO Box 1354 • Lafayette IN 47902
 Or, you may join online at: www.WabashValleyTrust.org

WE INVITE YOU to join us as we promote historic preservation throughout our community. For more information, visit our website or give us a call. We look forward to your participation!

CHOOSE YOUR MEMBERSHIP & BENEFITS

ALL MEMBERS receive recognition in the Trust newsletter, members-only pricing for events & programs, special discounts for Trust publications and gifts, and a 15% discount on membership in Historic Landmarks Foundation of Indiana.



INDIVIDUAL \$25

Membership for one person
 10% discount for all publications and gifts



FAMILY \$50

Membership for a couple or family
 10% discount for all publications and gifts



PATRON \$75

Membership for an individual, couple or family
 15% discount for all publications and gifts



LANDMARK \$100

Membership for an individual, couple or family
 20% discount for all publications and gifts



SPONSOR \$250

Membership for an individual, couple or family
 30% discount for all publications and gifts



BENEFACTOR \$500

Membership for an individual, couple or family
 40% discount for all publications and gifts
 Special Benefactor pricing for events
 Recognition at the Gala Annual Meeting



FOUNDER \$1000

Membership for an individual, couple or family
 50% discount for all publications and gifts
 Special Founder pricing for events
 Free admission to all Trust programs
 Recognition at the Gala Annual Meeting



NEIGHBORHOOD ASSOCIATIONS \$50

Partner with the Trust to protect, preserve, and promote YOUR historic neighborhood!



CORPORATE MEMBERSHIP \$100 - 1000

Invest in preserving your community!
 Please contact us for more information.



NAME _____

ADDRESS _____

CITY _____ STATE _____ ZIP _____

E-MAIL _____

PHONE _____

☐ INDIVIDUAL \$25 _____

☐ FAMILY \$50 _____

☐ PATRON \$75 _____

☐ LANDMARK \$100 _____

☐ SPONSOR \$250 _____

☐ BENEFACTOR \$500 _____

☐ FOUNDER \$1000 _____

☐ NEIGHBORHOOD ASSOC. \$50 _____

☐ ADDITIONAL DONATION for:

☐ Programs ☐ Advocacy ☐ Tours

☐ Restoration ☐ Publications

☐ Wherever it's needed most _____

☐ Please send information on

CORPORATE MEMBERSHIP

TOTAL

PAYMENT

☐ Check enclosed Check # _____

☐ Credit Card: ☐ Visa ☐ MC ☐ Discover

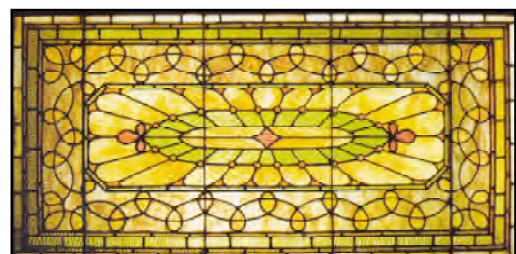
Card # _____

Expiration Date _____ Security Code _____

Name on card _____

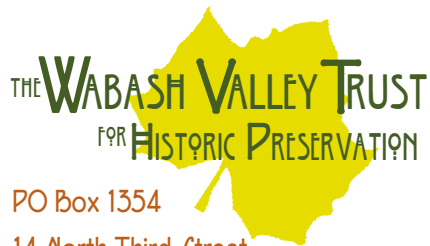
Questions? Need more info? 765.420.0268

The Wabash Valley Trust is a not-for-profit corporation & all contributions are tax-deductible under Section 501(c)(3) of the IRS Code.



From "Private Light," a stained glass postcard collection published by the Trust in sets of 12.

The mother art is **ARCHITECTURE**. Without an architecture of our own we have no soul of our own civilization. **FRANK LLOYD WRIGHT**



PO Box 1354
14 North Third Street
Lafayette IN 47902
765.420.0268
www.WabashValleyTrust.org

Nonprofit
Organization
US Postage PAID
Lafayette IN
Permit # 31

Address service requested

In This Issue

Upcoming Events:	1
Plaque Presentation	
Gala Annual Meeting	
Holiday Home Tour	
Board of Directors	3
Current Housing Projects	4
Director's Column	2
Membership Opportunities	7
National Homes Mystery!	5
New Terra Cotta Publication	6
Plaques/Structures/Summary	6
President's Letter	2
PU Houses & Culture Project	3
Resources from the Trust	5
Thank You!	3
Volunteering at the Trust:	5
Volunteer Highlight	
Opportunities	
Welcome New Members!	3
We Need	4
What's New?	4

THE WABASH VALLEY TRUST FOR HISTORIC PRESERVATION

AWARDS 

PROJECTS 

PROGRAMS 

EDUCATION 

PUBLICATIONS 

FUN! 

WE RECOGNIZE

preservation and restoration efforts, large and small, through awards and plaques.

WE COLLABORATE

with government and private agencies to restore and provide affordable housing in historic neighborhoods.

WE PROVIDE

opportunities for citizens to learn about the history and architecture of their homes.

WE HELP

property owners discover best practices for cost-effective renovation and restoration.

WE PUBLISH

materials and guides highlighting local preservation and rehabilitation resources.

WE HAVE FUN

with preservation! Tours, parties, and events offer our community opportunities to celebrate its architectural heritage.

Our ARCHITECTURE reflects truly as a mirror.
LOUIS HENRI SULLIVAN





MORE THANKS!

 **THE TRUST** is grateful for the support and involvement of its many members and sponsors!



FOUNDER MEMBERSHIP

Patty Barrett
Charles Cutter & Susan Curtis
Michael Simpson
Shirley West
Dale & Mary Whittaker



BENEFACTOR MEMBERSHIP

Bill Bray
James & Persis Newman
Richard Stout



CORPORATE MEMBERSHIP

Kirby Risk Corporation
Community Ventures in Living, Ltd.
Cook Biotech, Inc.
ISU Underwood Agency
Lafayette Savings Bank
Von Tobel Lumber & Hardware



FAMILY MEMBERSHIP

Senator Ron Alting
Linda & Virgil Barnes
Don & Carolyn Baumis
Dale & Maxine Bough
William & Jane Bremer
Louis Camilotto
Jim & Marilyn Dammon
Tom & Jeanne Dano
Marsh Davis
Roland Ditto
Paul & Barbara Dixon
Frank & Alison Donaldson
James & Linda Eales
Alan Ferrell
Don & Ruth Ann Ferris
Ken & Jackie Field
Jane Frankenberger
Friends of Downtown
Ned Derhammer & Nola Gentry
John & Shirley Gerhart
Robert & Kathleen Gloyeske
James & Noriko Keating
John & Janice Knotte
William & Roberta Keirce
Blythe Lee
Jim & Marifran Mattson
Ann Clark & James McCann
Kitti Carriker & Gerry McCartney
Katherine McMillin
Steve & Kimberly Meyer



LANDMARK MEMBERSHIP

Van Anderson
Jim Andrew
James & Sandra Bodenmiller
Jeffrey & Jane Boswell
Nicholas Carson
John Christian
Mary Ann Combs
David & Laura Edwards
Mary Louise Foster
William & Virginia Freeman
Dick & Connie Grace
Robert & Ellen Haan
Susan & Stephen Henson
Bryan Hockman
Bruce & Mary Ann Junius
Irene Kohls
Clarence & Denise Lopp
Robert Mertz



INDIVIDUAL MEMBERSHIP

Thomas & Margaret Abbott
Carol Abell
Muriel Andrew
Susan Andrews
Richard Baker
Tammy Balser
William Baugh
Buck Black
Aaron & Eileen Booth
Ruth Borden
Kathy Bowker
James Brown
Joe & Constance Bumbleberg
Sharon Burgett
John Castor, DDS
Steve & Kelly Curtis
Jane Ewbank
Norbert & Carolyn Fisher
Teresa Garrison
Charles & Trudy Gipson
Nancy Ince
Douglas & Linda Kern
Kaye Kleine-Ahlbrandt
Annadell Lamb
Vicki Leavitt
Doris Lintner



PATRON MEMBERSHIP

Alan & Gail Beck
Keith Brown
Dennis Carson
Lillian Cote
Leon Dickson
Rebecca Ehresman
Gwen Erwood
Carl & Lynn Griffin
Michael & Phyllis Hunt
Vic & Sheila Klinker
Robert & Jean Leavitt
Ruth & Tom Moran
Angela Palikaris
William Risk
Larry & Marianne Rose
Arnold & Janet Sweet
Harold Woodman
Gary Brouillard
Chris Brown
James Klatch
John & Dortha Osmun

Kenneth McCammon
Jerome McTague
William & Peggy Mellette
William & Jennifer Mermoud
Nell Miller
Jan Payne
Carol Rausch
Shirley Rose
Martha Sackett
Dick Schenkel
Pauline Schiavone
Richard Schweickert
Chase Slaughter
Elsie Smith
James Sondgeroth
Jane Turner
Eric Van Cleave
Thomas Van Horn
Mary Weeks
Pat Wilkerson
Richard & Carolyn Jagacinski
Tippecanoe Arts Federation
Tippecanoe County
Historical Association
Linda Tolley

John & Karen Mills
Scott & Jan Mills
Kent & Linda Moore
Gordon & Dianne Mork
Richard Nagel
Douglas & Patricia Noll
John & Marian Oberholtzer
Tom & Ruth O'Connor
Dawn and Joe Ogas
Edward Opperman
Ken & Marcelite Parish
Glenn & Suzanne Parker
Jack & Elaine Pearlman
Louis & Ann Pellegrino
Terry & Lynne Phillips
Edward & Shirley Ann Reser
Jeffrey & Kristiana Roberts
Ron & Josette Rolley
James & Marilyn Ross
Tony and Tonya Roswarski
Joe & Bernie Seaman
Dick & Wilda Skidmore
James & Elizabeth Solberg
David & Dorothy Taylor
Bill & Sharon Theobald
Randy Truitt
Tim & Erin Vanderkleed
Edward and Nancy Wagoner
David J. Williams
Lafayette-West Lafayette
Convention & Visitor's Bureau

PRESERVATIONISTS are the only people in the world who are invariably confirmed in their wisdom *after* the fact.
JOHN KENNETH GALBRAITH